



# VISIBILITY COLLECTION

# RED K



# KAP

**RED KAP®**  
1923



## TABLE OF CONTENTS

**4** Hi-Visibility Collection

**6** ANSI I07 Standard

**8** ANSI I07 Classifications

**10** ANSI I07 Product Guide

**28** Enhanced Visibility Collection

**36** Customization

**42** How to Measure

**44** Size Charts

**46** Glossary

**47** Index







# HI-VISIBILITY



**RED KAP®**  
1923

## INTRODUCTION TO THE ANSI/ISEA 107 HI-VISIBILITY STANDARD

*The American National Standard for High-Visibility Safety Apparel* (ANSI/ISEA 107) is a standard established by the American National Standards Institute. Construction, maintenance, utility, emergency responders, airport ramp personnel and many categories of off-road workers are routinely exposed to potential injury hazards from low visibility while on the job.

This standard provides guidelines for the selection and use of high-visibility safety apparel to improve worker visibility in complex environments during the day, in low-light conditions, and at night.

Private companies, as well as various federal, state, and local authorities have embraced ANSI/ISEA 107-compliant garments as useful PPE (Personal Protective Equipment) for workers exposed to potential struck-by hazards.

### ANSI/ISEA 107 SPECIFIES THE FOLLOWING CRITERIA MUST BE MET:

- Performance requirements for background material, combined-performance, and retro-reflective materials
- Photometric and physical performance requirements for retro-reflective and combined-performance materials
- Minimum total luminance requirements for hi-visibility background material
- Garment design
- Proper labeling

## FINAL RULE

The Final Rule, 23 CFR Part 634 Worker Visibility, was passed on November 18, 2006, and took effect on November 24, 2008.

The Rule states that all workers within a right-of-way of a Federal-aid highway who are exposed to traffic or to construction equipment within the work area shall wear High-Visibility apparel that must meet Performance Class 2 or Class 3 requirements of ANSI/ISEA 107.

The Federal Register Final Rule and revised document of the 2009 Manual on Uniform Traffic Control Devices (MUTCD) was released on December 16, 2009.

The Rule states that mandatory use areas are expanded beyond Federal-aid highways and will require all workers on or near the roadway right-of-way to wear high visibility safety apparel that meets Performance Class 2 or 3 of ANSI 107-2004 or equivalent revisions. The Federal Highway Administration has issued a formal interpretation recognizing the 2015 edition of ANSI/ISEA 107 as meeting the requirements of 2009 MUTCD.





# HIGHLIGHTS OF THE ANSI HI-VISIBILITY STANDARD

## ANSI/ISEA 107 AND ANSI/ISEA 207 WERE COMBINED INTO ANSI/ISEA 107

This consolidation covers the needs of workers in all industries for high visibility garments. The standard is under continuous review by a technical committee and a revised edition is published every five years.

### ALLOWANCE FOR SMALLER SIZED GARMENTS

Garment performance classes are defined by minimum area requirements for both hi-visibility background material and retroreflective striping. Prior minimum requirements for background fabric prevented manufacturers from offering smaller sized garments. Beginning with the 2015 edition of ANSI/ISE 107, included a reduction in the minimum requirement for hi-vis background fabric was allowed in only the smallest size garment offered by the manufacturer. This change, which is still valid in the current 2020 edition, made smaller sized garments available to workers who previously were forced to wear garments that were too large for them in order to be compliant with the standard.



**Background Fabric:**  
Class 2, Level 2  
ANSI/ISEA 107-2010  
775 Sq. In.



**Background Fabric:**  
Type R, Class 2  
ANSI/ISEA 107-2015  
540 Sq. In.

### LABELING REQUIREMENTS

In addition to garment brand, size and care instructions, labels must carry these elements:

- A** Must state that garment meets ANSI 107 and the year/addition of the standard the garment is certified to.
  - Must contain pictogram showing:
- B** Garment Type (O, R or P)
- C** Garment Performance Class
- D** If the garment is not FR, must state "This garment is not flame resistant as defined by ANSI/ISEA 107-2020 Section 10.5"

**ANSI - ISEA 107-2020  
THIS GARMENT IS NOT  
FLAME RESISTANT AS  
DEFINED BY ANSI-ISEA  
107-2020 SECTION 10.5**



**TYPE R  
CLASS 2  
NOT FR**

**A**

**D**

**B**

**C**

**D**

**In 2015, there was an addition of garment types (O, R, and P) which address a wider range of occupations that should wear high visibility safety apparel.**



# BE SEEN. BE SAFE.

Know the ANSI / ISEA 107 Standards.



## TYPE O, CLASS 1 GARMENTS

Intended for use in environments where there are struck-by hazards from moving vehicles, equipment, and machinery **not** operating on public access rights of way or temporary traffic control zones.

- Warehousing
- Parking/Service location worker
- Oil & Gas extraction workers
- Refinery workers
- Mining



FABRIC and  
REFLECTIVE  
REQUIREMENTS

BMA\* 217 in<sup>2</sup>  
RMA\*\* 155 in<sup>2</sup>  
BMWM\*\*\* 1"

## TYPE R, CLASS 2 GARMENTS

Intended for use by personnel exposed to vehicular traffic from public access rights of way or roadway temporary traffic control zones. Class 2 garments require the use of greater amounts of high-visibility materials which help distinguish between a human and an inanimate object.



- Delivery vehicle drivers
- Forestry operations
- Ship cargo loading operations
- Roadway construction
- Utility and railway workers
- School crossing guards
- High-volume parking and toll gate personnel
- Airport ground crews
- Trash collection and recycling operations

FABRIC and  
REFLECTIVE  
REQUIREMENTS

BMA\* 775 in<sup>2</sup>  
RMA\*\* 201 in<sup>2</sup>  
BMWM\*\*\* 1.38"  
(1" for split trim)

FABRIC and REFLECTIVE REQUIREMENTS KEY: \*BMA - Background Material Amounts, \*\*RMA - Reflective Material Amounts, \*\*\*BMWM - Background Material Width Minimums



# BE IN COMPLIANCE.



## TYPE R, CLASS 3 GARMENTS

Intended for use by personnel exposed to vehicular traffic from public access rights of way or roadway temporary traffic control zones. Class 3 garments mandate the highest standard of visibility for workers in moving, complex backgrounds.

- Roadway construction personnel and flaggers
- Utility workers
- Survey crews

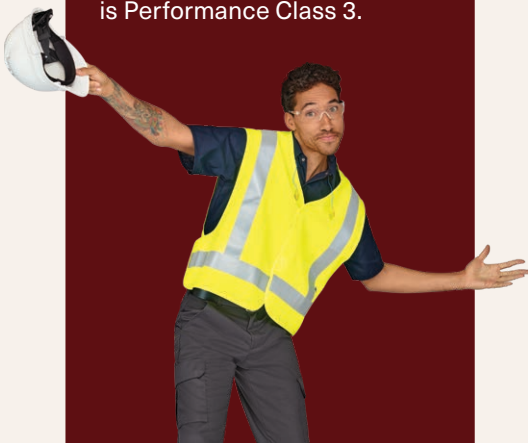


**FABRIC and REFLECTIVE REQUIREMENTS**

**BMA\*** 1240 in<sup>2</sup>  
**RMA\*\*** 310 in<sup>2</sup>  
**BMWM\*\*\*** 2"  
 (1" for split trim)

## SUPPLEMENTAL, CLASS E GARMENTS

Pants, bib overalls, shorts and gaiters meeting minimum area requirements for background material and retroreflective trim. Class E apparel, however, cannot be worn alone to provide adequate visibility and compliance of workers. When Class E items are worn with Performance Class 2 or 3 apparel, the overall classification of the ensemble is Performance Class 3.



**FABRIC and REFLECTIVE REQUIREMENTS**

**BMA\*** 465 in<sup>2</sup>  
**RMA\*\*** 109 in<sup>2</sup>  
**BMWM\*\*\*** 2"  
 (1" for split trim)

## TYPE P, CLASS 2 & CLASS 3 GARMENTS

Intended for emergency responders and law enforcement personnel in environments with struck-by hazards from traffic operating on public access rights of way or temporary traffic control zones.

- Police Officers
- Sheriff
- Firefighters
- EMS

**FABRIC and REFLECTIVE REQUIREMENTS**

**BMA\***  
 Class 2 - 450 in<sup>2</sup>  
 Class 3 - 775 in<sup>2</sup>  
**RMA\*\***  
 Class 2 - 201 in<sup>2</sup>  
 Class 3 - 310 in<sup>2</sup>  
**BMWM\*\*\***  
 Class 2 & 3 - 2"  
 (1" for split trim)

## A CLASS ACT

Hi-Visibility Workwear  
for all ANSI / ISEA 107  
Classifications.



### TYPE O, CLASS 1



**HI-VISIBILITY RIPSTOP  
COLOR BLOCK WORK SHIRT**  
Short & Long Sleeve, Pg. 12

### TYPE R, CLASS 2



**HI-VISIBILITY RIPSTOP  
COLOR BLOCK WORK SHIRT**  
Short & Long Sleeve, Pg. 13



**HI-VISIBILITY RIPSTOP WORK  
SHIRT WITH MIMIX® & OILBLOK**  
Short & Long Sleeve, Pgs. 14-15



**HI-VISIBILITY RIPSTOP  
WORK SHIRT**  
Short & Long Sleeve, Pg. 16



**HI-VISIBILITY WORK SHIRT  
100% POLYESTER**  
Short & Long Sleeve, Pg. 17



**HI-VISIBILITY PERFORMANCE  
CORE TEE – SOLID STRIPING**  
Short & Long Sleeve, With &  
Without Pocket, Pg. 18



**HI-VISIBILITY PERFORMANCE  
CORE TEE – SEGMENTED STRIPING**  
Short & Long Sleeve, With &  
Without Pocket, Pg. 19



**HI-VISIBILITY  
SAFETY VEST**  
Pg. 24



**HI-VISIBILITY  
BOMBER**  
Pg. 24



**HI-VISIBILITY  
JACKET**  
Pg. 25



**HI-VISIBILITY  
PERFORMANCE  
WORK HOODIE**  
Pg. 26



## TYPE R, CLASS 3



**HI-VISIBILITY RIPSTOP WORK SHIRT WITH MIMIX® & OILBLOK**

Short & Long Sleeve, Pgs. 20-21



**HI-VISIBILITY RIPSTOP WORK SHIRT**

Short & Long Sleeve, Pg. 22



**HI-VISIBILITY WORK SHIRT 100% POLYESTER**

Short & Long Sleeve, Pg. 22



**HI-VISIBILITY T-SHIRT**

Short & Long Sleeve, Pg. 23



**HI-VISIBILITY PERFORMANCE CORE TEE – SOLID STRIPING**

Short & Long Sleeve, With & Without Pocket, Pg. 23



**HI-VISIBILITY PERFORMANCE CORE POLO**

Pg. 24



**HI-VISIBILITY JACKET**

Pg. 25



**HI-VISIBILITY SOFT SHELL JACKET**

Pg. 25



**HI-VISIBILITY ZIP-FRONT COVERALL**

Pg. 27

## SUPPLEMENTAL, CLASS E



**HI-VISIBILITY UTILITY POCKET PANT** Pg. 27



# HI-VISIBILITY



SY80YC, SY70YC

SY70YN

## HI-VISIBILITY RIPSTOP COLOR BLOCK WORK SHIRT – TYPE O, CLASS I

- Color blocking hides stains
- 360° visibility
- 2.5" yellow/silver reflective striping
- 1.5" silver reflective striping
- UPF 40
- Color retention
- Soil release
- Superior wicking
- Resists wrinkles
- Extra durable, lightweight ripstop fabric
- Button-close chest pockets
- Pencil stall
- Fit chart MFC-151 • Industrial laundry friendly
- Meets Type O Class 1 requirements of ANSI / ISEA 107

4.25 oz. Ripstop, 65% Polyester / 35% Cotton  
Country of Origin: Imported

**SY80** SHORT SLEEVE (Reg) S-4XL, (Long) L-2XL

**SY70** LONG SLEEVE (Reg) S-4XL, (Long) L-2XL



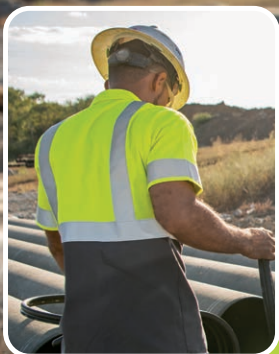
Fluorescent  
Yellow/Green  
and Charcoal  
Ripstop YC



Fluorescent  
Yellow/Green  
and Navy  
Ripstop YN







**LIGHTWEIGHT**  
*But* **DURABLE**

SY14YC, SY24YC



SY14YG

## HI-VISIBILITY RIPSTOP COLOR BLOCK WORK SHIRT – TYPE R, CLASS 2

- Color blocking hides stains
- 360° visibility
- 2" reflective striping
- UPF 40
- Color retention
- Soil release
- Superior wicking
- Resists wrinkles
- Extra durable, lightweight ripstop fabric
- Button-close chest pockets
- Pencil stall
- Fit chart MFC-151
- **Industrial laundry friendly**
- **Meets Type R Class 2 requirements of ANSI / ISEA 107**

4.25 oz. Ripstop, 65% Polyester / 35% Cotton  
Country of Origin: Imported

**SY24** SHORT SLEEVE (Reg) S-4XL, (Long) L-2XL  
**SY14** LONG SLEEVE (Reg) S-4XL, (Long) L-2XL



Fluorescent  
Yellow/Green  
and Charcoal  
Ripstop YC



Fluorescent  
Yellow/Green  
and Grey  
Ripstop YG



Fluorescent  
Yellow/Green  
and Navy  
Ripstop YN



# HI-VISIBILITY



WITH  
**MIMIX**®

SX24HV

## MIMIX<sup>®</sup>

puts flex panels  
where you need them.  
Stretch, twist, and  
pull without the rips,  
tears, and snares.

US PATENT NO.  
10,085,490 & 11,051,559



## OILBLOK

keeps your workwear  
out of early retirement  
by making sure stains  
never happen.





## HI-VISIBILITY RIPSTOP WORK SHIRT WITH MIMIX® & OILBLOK TYPE R, CLASS 2

- Flex mesh panel improves mobility
- OilBlok tackles the toughest oils and liquids at the surface
- Extra durable, lightweight ripstop fabric
- Concealed snap front closure
- Button-close chest pockets
- Pencil stall
- Color retention
- Soil release
- Superior wickability
- 2" reflective striping
- 360° visibility
- UPF 40
- Fit chart MFC-151
- Industrial laundry friendly
- Meets Type R Class 2 requirements of ANSI / ISEA 107

**BODY:** 4.25 oz. Ripstop, 65% Polyester / 35% Cotton

**FLEX PANEL:** 4.2 oz. Performance Mesh, 100% Polyester

Country of Origin: Imported

**SX24HV** SHORT SLEEVE (Reg) S-4XL, (Long) L-2XL

**SX14HV** LONG SLEEVE (Reg) S-4XL, (Long) L-2XL



Fluorescent  
Yellow/Green  
Ripstop HV

**RIPSTOP  
FABRIC**



SX24HV

**FLEX  
PANELS**



SX14HV



SY14HV



## HI-VISIBILITY RIPSTOP WORK SHIRT – TYPE R, CLASS 2

- 360° visibility
- 2" reflective striping
- UPF 40
- Color retention
- Soil release
- Superior wicking
- Resists wrinkles
- Extra durable, lightweight ripstop fabric
- Button-close chest pockets
- Pencil stall
- Fit chart MFC-151
- Industrial laundry friendly
- Meets Type R Class 2 requirements of ANSI / ISEA 107

4.25 oz. Ripstop, 65% Polyester / 35% Cotton  
Country of Origin: Imported

**SY24HV** SHORT SLEEVE (Reg) S-4XL, (Long) L-2XL  
**SY14HV** LONG SLEEVE (Reg) S-4XL, (Long) L-2XL



Fluorescent  
Yellow/Green  
Ripstop HV



SY24HV





## HI-VISIBILITY WORK SHIRT, 100% POLYESTER – TYPE R, CLASS 2

- 360° visibility
- 2" reflective striping
- UPF 40
- Color retention
- Soil release
- Superior wicking
- Resists wrinkles
- 100% polyester
- Button-close chest pockets
- Pencil stall
- Fit chart MFC-151
- Industrial laundry friendly
- Meets Type R Class 2 requirements of ANSI / ISEA 107

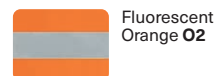
5 oz. Poplin, 100% Polyester  
Country of Origin: Imported

**SS24HV** SHORT SLEEVE (Reg) S-4XL, (Long) L-2XL

**SSI4HV** LONG SLEEVE (Reg) S-4XL, (Long) L-2XL

**SS24O2** SHORT SLEEVE (Reg) S-4XL, (Long) L-2XL

**SSI4O2** LONG SLEEVE (Reg) S-4XL, (Long) L-2XL



SS24O2, SSI4O2



SK07HV



BACK

## HI-VISIBILITY PERFORMANCE CORE TEE – TYPE R, CLASS 2 SOLID STRIPING

- Color retention
- Superior wicking
- Wrinkle & snag resistant
- Breathable, soft cotton-like hand
- Ribbed collar
- Available with and without chest pocket
- **Industrial laundry friendly**
- **Meets Type R Class 2 requirements of ANSI / ISEA 107**

5.84 oz. Jersey Knit, 100% Spun Polyester  
Country of Origin: Imported

**SK07HV** SHORT SLEEVE, POCKET (Reg) S-6XL

**SK57HV** SHORT SLEEVE, NO POCKET (Reg) S-6XL

**STOCK** Vis Yellow  
Lime HV

*\*Style/color may be subject to limited inventory. Please call Customer Service for confirmation of availability. 8-10 week lead time.*

**SK07OV** SHORT SLEEVE, POCKET (Reg) S-6XL

Vis Orange  
OV



SK17OV



BACK

## HI-VISIBILITY PERFORMANCE CORE TEE – TYPE R, CLASS 2 SOLID STRIPING

- Color retention
- Superior wicking
- Wrinkle & snag resistant
- Breathable, soft cotton-like hand
- Ribbed collar & ribbed cuff
- Available with and without chest pocket
- **Industrial laundry friendly**
- **Meets Type R Class 2 requirements of ANSI / ISEA 107**

5.84 oz. Jersey Knit, 100% Spun Polyester  
Country of Origin: Imported

**SK67HV** LONG SLEEVE, NO POCKET (Reg) S-6XL

**STOCK** Vis Yellow  
Lime HV

*\*Style/color may be subject to limited inventory. Please call Customer Service for confirmation of availability. 8-10 week lead time.*

**SK17HV** LONG SLEEVE, POCKET (Reg) S-6XL

**SK17OV** LONG SLEEVE, POCKET (Reg) S-6XL

Vis Yellow  
Lime HV

Vis Orange  
OV





SK270V



BACK

## HI-VISIBILITY PERFORMANCE CORE TEE – TYPE R, CLASS 2 SEGMENTED STRIPING

- Color retention
- Superior wicking
- Wrinkle & snag resistant
- Breathable, soft cotton-like hand
- Ribbed collar
- Available with and without chest pocket
- **Industrial laundry friendly**
- **Meets Type R Class 2 requirements of ANSI / ISEA 107**

5.84 oz. Jersey Knit, 100% Spun Polyester  
Country of Origin: Imported

*\*Style/color may be subject to limited inventory. Please call Customer Service for confirmation of availability. 8-10 week lead time.*

**SK25HV** SHORT SLEEVE, POCKET (Reg) S-6XL

**SK270V** SHORT SLEEVE, NO POCKET (Reg) S-6XL

Vis Yellow  
Lime HV

Vis Orange  
OV



SK29HV



BACK

## HI-VISIBILITY PERFORMANCE CORE TEE – TYPE R, CLASS 2 SEGMENTED STRIPING

- Color retention
- Superior wicking
- Wrinkle & snag resistant
- Breathable, soft cotton-like hand
- Ribbed collar & ribbed cuff
- Available with and without chest pocket
- **Industrial laundry friendly**
- **Meets Type R Class 2 requirements of ANSI / ISEA 107**

5.84 oz. Jersey Knit, 100% Spun Polyester  
Country of Origin: Imported

*\*Style/color may be subject to limited inventory. Please call Customer Service for confirmation of availability. 8-10 week lead time.*

**SK29HV** LONG SLEEVE, POCKET (Reg) S-6XL

Vis Yellow  
Lime HV

# HI-VISIBILITY

MOBILITY  
*and* COMFORT



SX14AB

## MIMIX<sup>®</sup>

puts flex panels  
where you need them.  
Stretch, twist, and  
pull without the rips,  
tears, and snares.

US PATENT NO.  
10,085,490 & 11,051,559







## HI-VISIBILITY RIPSTOP WORK SHIRT WITH MIMIX® & OILBLOK TYPE R, CLASS 3

- Flex mesh panel improves mobility
- OilBlok tackles the toughest oils and liquids at the surface
- Extra durable, lightweight ripstop fabric
- Concealed snap front closure
- Button-close chest pockets
- Pencil stall
- Color retention
- Soil release
- Superior wickability
- 2" reflective striping
- 360° visibility
- UPF 40
- Fit chart MFC-151
- Industrial laundry friendly
- Meets Type R Class 3 requirements of ANSI / ISEA 107

**BODY:** 4.25 oz. Ripstop, 65% Polyester / 35% Cotton

**FLEX PANEL:** 4.2 oz. Performance Mesh, 100% Polyester

Country of Origin: Imported

**SX24AB SHORT SLEEVE** (Reg) S-4XL, (Long) L-2XL

**SX14AB LONG SLEEVE** (Reg) S-4XL, (Long) L-2XL



# OILBLOK

keeps your workwear out of early retirement by making sure stains never happen.







SY14AB

## HI-VISIBILITY RIPSTOP WORK SHIRT – TYPE R, CLASS 3

- 360° visibility
- 2" reflective striping
- UPF 40
- Color retention
- Soil release
- Superior wicking
- Resists wrinkles
- Extra durable, lightweight ripstop fabric
- Button-close chest pockets
- Pencil stall
- Fit chart MFC-151
- Industrial laundry friendly
- Meets Type R Class 3 requirements of ANSI / ISEA 107

4.25 oz. Ripstop, 65% Polyester / 35% Cotton  
Country of Origin: Imported

**SY24AB** SHORT SLEEVE (Reg) S-4XL, (Long) L-2XL

**SY14AB** LONG SLEEVE (Reg) S-4XL, (Long) L-2XL



SS24AB

SS14OF

## HI-VISIBILITY WORK SHIRT, 100% POLYESTER – TYPE R, CLASS 3

- 360° visibility
- 2" reflective striping
- UPF 40
- Color retention
- Soil release
- Superior wicking
- Resists wrinkles
- 100% polyester
- Button-close chest pockets
- Pencil stall
- Fit chart MFC-151
- Industrial laundry friendly
- Meets Type R Class 3 requirements of ANSI / ISEA 107

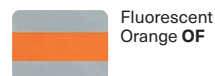
5 oz. Poplin, 100% Polyester  
Country of Origin: Imported

**SS24AB** SHORT SLEEVE (Reg) S-4XL, (Long) L-2XL

**SSI4AB** LONG SLEEVE (Reg) S-4XL, (Long) L-2XL

**SS24OF** SHORT SLEEVE (Reg) S-4XL, (Long) L-2XL

**SSI4OF** LONG SLEEVE (Reg) S-4XL, (Long) L-2XL





SK09HV



BACK

## HI-VISIBILITY PERFORMANCE CORE TEE – TYPE R, CLASS 3 SOLID STRIPING

- Color retention
- Superior wicking
- Wrinkle & snag resistant
- Breathable, soft cotton-like hand
- Ribbed collar
- Ribbed cuff on long sleeve
- Available with and without chest pocket
- **Industrial laundry friendly**
- **Meets Type R Class 3 requirements of ANSI / ISEA 107**

5.84 oz. Jersey Knit, 100% Spun Polyester  
Country of Origin: Imported

*\*Style/color may be subject to limited inventory. Please call Customer Service for confirmation of availability. 8-10 week lead time.*

**SK09HV** SHORT SLEEVE, POCKET (Reg) M-6XL  
**SKI9HV** LONG SLEEVE, POCKET (Reg) M-6XL

Vis Yellow  
Lime HV



BREATHABLE  
MESH FABRIC

SVY4AB

SVY3AB

## HI-VISIBILITY T-SHIRT TYPE R, CLASS 3 SEGMENTED STRIPING

- Extra breathable mesh fabric
- Chest pocket
- 2" reflective striping
- 360° visibility
- UPF 40
- Fit chart MFC-141
- **Meets Type R Class 3 requirements of ANSI / ISEA 107**

4 oz. Birdseye Mesh, 100% Polyester  
Country of Origin: Imported

**SVY4AB** SHORT SLEEVE (Reg) S-6XL, (Long) L-6XL  
**SVY3AB** LONG SLEEVE (Reg) S-6XL

Fluorescent  
Yellow/Green  
AB

NEW

SY03HV

BACK



## HI-VISIBILITY PERFORMANCE CORE POLO TYPE R, CLASS 3

- 360° visibility • Reflective solid tape • Color retention
- Superior wicking • Wrinkle & snag resistant
- Breathable • Soft, cotton-like hand • Ribbed collar
- Chest pocket • Side vents • Placket with buttons
- Short sleeves • **Industrial laundry friendly**
- **Meets Type R Class 3 requirements of ANSI / ISEA 107**

5.84 oz. Jersey Knit, 100% Spun Polyester  
Country of Origin: Imported

**SK03HV** (Reg) M-6XL



Fluorescent  
Yellow/Green  
HV



VYV6YE



## HI-VISIBILITY SAFETY VEST TYPE R, CLASS 2

- 360° visibility • 2" silver reflective striping
- Dual sizing • Adjustable sides
- Velcro front • Fit chart MFC-18
- **Meets Type R Class 2 requirements of ANSI / ISEA 107**

4.7 oz. 100% Polyester  
Country of Origin: Imported

**VYV6YE** S/M, L/XL, 2XL/3XL, 4XL/5XL



Fluorescent  
Yellow/Green  
YE



JY38HVB

BACK



## HI-VISIBILITY BOMBER TYPE R, CLASS 2

- 360° visibility • 2" silver reflective striping • UPF 40
- Storm-flap covered zipper • Stand-up collar
- Lined snap-close cuffs • Oversized hand-warmer pockets
- Inside chest pocket • Action back
- Fit chart MFC-17 • **Industrial laundry friendly**
- Allow additional time for delivery
- **Meets Type R Class 2 requirements of ANSI / ISEA 107**

7.5 oz. Twill, 100% Polyester  
Country of Origin: Imported

**JY38HVB** (Reg) M-4XL, (Long) M-3XL



Fluorescent  
Yellow/Green  
HV





## HI-VISIBILITY JACKET TYPE R, CLASS 2

- 360° visibility • 2" silver reflective striping • UPF 40
- Button-close chest pockets • Adjustable cuffs and waist
- Unlined • Fit chart MFC-12 • **Industrial laundry friendly**
- Compatible with Zip-in/Zip-out Liner (LN30)
- **Meets Type R Class 2 requirements of ANSI / ISEA 107**

7.5 oz. Twill, 100% Polyester  
Country of Origin: Imported

**JY32HV** (Reg) 38-54, (Long) 42-50



## HI-VISIBILITY JACKET TYPE R, CLASS 3

- 360° visibility • 2" silver reflective striping • UPF 40
- Button-close chest pockets • Adjustable cuffs and waist
- Unlined • Fit chart MFC-12 • **Industrial laundry friendly**
- Compatible with Zip-in/Zip-out Liner (LN30)
- **Meets Type R Class 3 requirements of ANSI / ISEA 107**

7.5 oz. Twill, 100% Polyester  
Country of Origin: Imported

**JY32AB** (Reg) 38-54, (Long) 42-50



## HI-VISIBILITY SOFT SHELL JACKET TYPE R, CLASS 3

- 360° visibility • 2" stretch silver reflective striping
- Wind and water-resistant • Stretch fabric • Fleece lining
- Modern fit and styling • Stand-up collar • Front zipper pockets
- Zippered chest pocket • Headphone storage
- Adjustable drawstring waist • Fit chart MFC-25
- **Industrial laundry friendly**
- **Meets Type R Class 3 requirements of ANSI / ISEA 107**

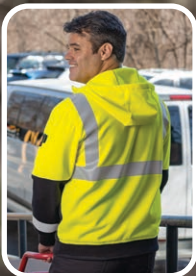
9 oz. Soft Shell, 95% Polyester / 5% Spandex  
Country of Origin: Imported

**JY34YB** (Reg) S-4XL



# HI-VISIBILITY

WATER  
REPELLANT



## HI-VISIBILITY PERFORMANCE WORK HOODIE – TYPE R, CLASS 2

- Wind and water resistant
- Modern fit and styling
- 2" stretch silver reflective striping
- ZeroScratch® front zipper with zipper garage
- Hidden drawstring and neck cinches
- Versatile lay flat or zip-up collar
- Front pouch pockets
- Sleeve utility pocket
- Cell phone security pocket
- Rib knit cuffs and waistband
- Add embroidery, heat seals or emblems for unique garment personalization
- Fit chart MFC-105
- **Industrial laundry friendly**
- **Meets Type R Class 2 requirements of ANSI / ISEA 107**

9.3 oz. Fleece, 100% Polyester  
Country of Origin: Imported

**HJ10YB** UNISEX (Reg) XS-4XL, (Long) L-XL

Vis Yellow/  
Black YB



# SAFECINCH®

SafeCinch technology tucks  
drawstrings away in your pockets  
for a fuss-free workday.

US PATENT NO. 8,875,313







CT10HVB



CT100VB



PT18HVB

## HI-VISIBILITY ZIP-FRONT COVERALL – TYPE R, CLASS 3

- 360° visibility
- 2" silver reflective striping
- UPF 40
- Wear over clothes
- Front & back pockets
- Chest pockets
- Rule leg pocket
- Side vent opening
- Fit chart MFC-24
- **Industrial laundry friendly**
- Allow additional time for delivery
- **Meets Type R Class 3 requirements of ANSI / ISEA 107**

7.5 oz. Twill, 100% Polyester  
Country of Origin: Imported

**CT10HVB** (Short) 38-56, (Reg) 32-70, (Long) 32-70,  
(X-Long) 46-50

**CT100VB** (Short) 38-56, (Reg) 32-70, (Long) 32-70,  
(X-Long) 46-50



Fluorescent  
Yellow/Green  
**HV**



Fluorescent  
Orange **OV**

## HI-VISIBILITY UTILITY POCKET PANT SUPPLEMENTAL, CLASS E

- 360° visibility
- 2" silver reflective striping
- UPF 40
- Front & back pockets
- Cargo pockets with hidden snaps
- **Industrial laundry friendly**
- Allow additional time for delivery
- **Meets Supplemental Class E requirements of ANSI / ISEA 107**

7.5 oz. Twill, 100% Polyester  
Country of Origin: Imported

**PT18HVB** 28-54



Fluorescent  
Yellow/Green  
**HV**



# ENHANCED VISIBILITY





# ENHANCED VISIBILITY



SP24EN

## ENHANCED VISIBILITY INDUSTRIAL WORK SHIRT

- 2.5" Yellow/Silver enhanced visibility trim
- Button-close chest pockets
- Pencil stall
- Fit chart MFC-151
- Industrial laundry friendly
- Does not meet ANSI/ISEA 107 requirements

4.25 oz. Poplin, 65% Polyester / 35% Cotton  
Country of Origin: Imported

**SP24EG** SHORT SLEEVE (Reg) S-4XL, (Long) L-2XL

**SPI4EG** LONG SLEEVE (Reg) S-4XL, (Long) L-2XL

**SP24EN** SHORT SLEEVE (Reg) S-4XL, (Long) L-2XL

**SPI4EN** LONG SLEEVE (Reg) S-4XL, (Long) L-2XL



Light Grey with  
Yellow/Silver  
Visibility Trim  
**EG**



Navy with  
Yellow/Silver  
Visibility Trim  
**EN**



SP14ON

## ENHANCED VISIBILITY SHIRT

- 2.5" Orange/Silver enhanced visibility trim
- Color retention
- Soil release
- Superior wicking
- Button-close chest pockets
- Pencil stall
- Fit chart MFC-151
- Industrial laundry friendly
- Does not meet ANSI/ISEA 107 requirements

4.25 oz. Poplin, 65% Polyester / 35% Cotton  
Country of Origin: Imported

**SP24ON** SHORT SLEEVE (Reg) S-4XL, (Long) L-2XL

**SPI4ON** LONG SLEEVE (Reg) S-4XL, (Long) L-3XL

**SP24WM** SHORT SLEEVE (Reg) S-4XL, (Long) M-2XL

**SPI4WM** LONG SLEEVE (Reg) S-4XL, (Long) M-3XL



Navy with  
Orange/Silver  
Visibility Trim  
**ON**



Light Grey with  
Orange/Silver  
Visibility Trim  
**WM**





SC40EG

## ENHANCED VISIBILITY COTTON WORK SHIRT

- 2.5" Yellow/Silver enhanced visibility trim
- Easy care finish
- 100% cotton
- Button-close chest pockets
- Pencil stall
- Fit chart MFC-151
- **Industrial laundry friendly**
- **Does not meet ANSI/ISEA 107 requirements**

6 oz. Twill, 100% Cotton  
Country of Origin: Imported

**SC40EG** SHORT SLEEVE (Reg) S-4XL, (Long) L-2XL

**SC30EG** LONG SLEEVE (Reg) S-4XL, (Long) L-2XL

**SC40EN** SHORT SLEEVE (Reg) S-4XL, (Long) L-2XL

**SC30EN** LONG SLEEVE (Reg) S-4XL, (Long) L-2XL



Light Grey with  
Yellow/Silver  
Visibility  
Trim EG



Navy with  
Yellow/Silver  
Visibility Trim  
EN



SY24YE

## ENHANCED VISIBILITY RIPSTOP WORK SHIRT

- Extra durable, lightweight ripstop fabric
- UPF 40
- Button-close chest pockets
- Pencil stall
- Fit chart MFC-151
- **Industrial laundry friendly**
- **Does not meet ANSI/ISEA 107 requirements**

4.25 oz. Ripstop, 65% Polyester / 35% Cotton  
Country of Origin: Imported

**SY24YE** SHORT SLEEVE (Reg) S-4XL, (Long) L-2XL

**SYI4YE** LONG SLEEVE (Reg) S-4XL, (Long) L-2XL



Fluorescent  
Yellow/Green  
Ripstop YE

# ENHANCED VISIBILITY



## ENHANCED VISIBILITY WORK SHIRT

- UPF 40 • Pencil stall • Button-close chest pockets
- Fit chart MFC-151 • **Industrial laundry friendly**
- **Does not meet ANSI/ISEA 107 requirements**

5 oz. Poplin, 100% Polyester  
Country of Origin: Imported

**SS24OR** SHORT SLEEVE (Reg) S-3XL, (Long) L-2XL  
**SS14OR** LONG SLEEVE (Reg) S-3XL, (Long) L-2XL

**SS24YE** SHORT SLEEVE (Reg) S-3XL, (Long) L-2XL  
**SS14YE** LONG SLEEVE (Reg) S-3XL, (Long) L-2XL



Fluorescent  
Orange **OR**



Fluorescent  
Yellow/Green **YE**



## ENHANCED VISIBILITY PERFORMANCE CORE POLO

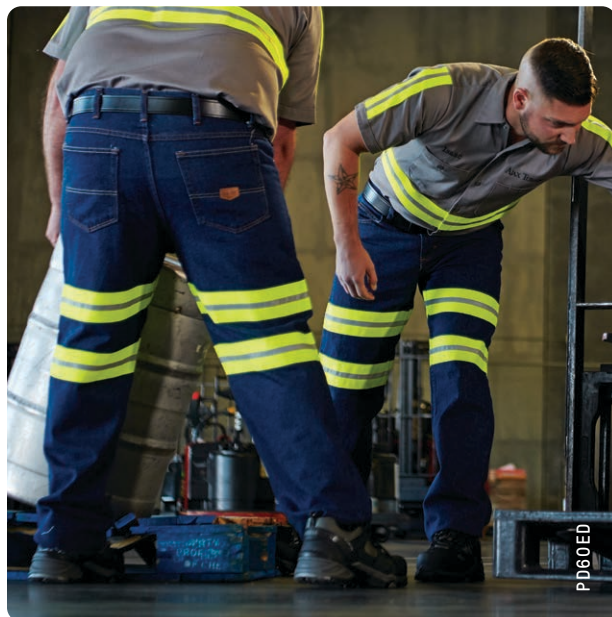
- Color retention • Superior wicking • Wrinkle & snag resistant
- Breathable • Soft, cotton-like hand • Ribbed collar
- Chest pocket • Side vents • Placket with buttons
- Short sleeves • **Industrial laundry friendly**
- **Does not meet ANSI/ISEA 107 requirements**

5.84 oz. Jersey Knit, 100% Spun Polyester  
Country of Origin: Imported

**SK01HV** (Reg) S-6XL



Fluorescent  
Yellow/Green **HV**



## ENHANCED VISIBILITY RELAXED FIT JEAN

- 2.5" Yellow/Silver enhanced visibility trim
- Relaxed fit • Fits over boots
- **Industrial laundry friendly**
- **Does not meet ANSI/ISEA 107 requirements**

13.75 oz. Heavyweight Denim, 100% Cotton  
Country of Origin: Imported

**PD60ED** 30-48



Prewashed Denim  
with Yellow/Silver  
Visibility Trim **ED**





PT88EN

## ENHANCED VISIBILITY INDUSTRIAL CARGO PANT

- 2.5" Yellow/Silver enhanced visibility trim
- Color retention
- Soft hand
- Soil release
- Resists wrinkles
- Traditional easy fit
- Cargo pockets with snap-close flaps
- Front & back pockets
- **Industrial laundry friendly**
- **Does not meet ANSI/ISEA 107 requirements**

7.5 oz. Twill,  
65% Polyester / 35% Cotton  
Country of Origin: Imported

**PT88EN** 30-48



Navy with Yellow/  
Silver Visibility  
Trim **EN**



PT20EN

## ENHANCED VISIBILITY DURA-KAP® INDUSTRIAL PANT

- 2.5" Yellow/Silver enhanced visibility trim
- Color retention
- Soft hand
- Soil release
- Resists wrinkles
- Traditional easy fit
- Front & back pockets
- **Industrial laundry friendly**
- **Does not meet ANSI/ISEA 107 requirements**

7.5 oz. Twill,  
65% Polyester / 35% Cotton  
Country of Origin: Imported

**PT20EN** 30-48



Navy with Yellow/  
Silver Visibility  
Trim **EN**



PC20EV

## ENHANCED VISIBILITY WRINKLE-RESISTANT COTTON PANT

- 2.5" Yellow/Silver enhanced visibility trim
- Color retention
- Soft hand
- Soil release
- Resists wrinkles
- Easy fit
- Front & back pockets
- **Industrial laundry friendly**
- **Does not meet ANSI/ISEA 107 requirements**

8.5 oz. Twill,  
100% Wrinkle-Resistant Cotton  
Country of Origin: Imported

**PC20EV** 30-56



Navy with Yellow/  
Silver Visibility  
Trim **EV**

# ENHANCED VISIBILITY



HJ10YE

**WATER  
REPELLANT**



## ENHANCED VISIBILITY PERFORMANCE WORK HOODIE

- Wind and water resistant
- Modern fit and styling
- ZeroScratch® front zipper with zipper garage
- Hidden drawstring and neck cinches
- Versatile lay flat or zip-up collar
- Front pouch pockets
- Sleeve utility pocket
- Cell phone security pocket
- Rib knit cuffs and waistband
- Add embroidery, heat seals or emblems for unique garment personalization
- Fit chart MFC-105
- **Industrial laundry friendly**
- **Does not meet ANSI/ISEA 107 requirements**

9.3 oz. Fleece, 100% Polyester  
Country of Origin: Imported

**HJIOYE UNISEX** (Reg) XS-4XL, (Long) L-XL

Vis Yellow  
YE



HJ10YE

# SAFECINCH®

SafeCinch technology tucks  
drawstrings away in your pockets  
for a fuss-free workday.

US PATENT NO. 8,875,313







## ENHANCED VISIBILITY PERMA-LINED PANEL JACKET

- 2.5" Yellow/Silver enhanced visibility trim
- Black quilt lining
- Hip length
- Fit chart MFC-12
- **Industrial laundry friendly**
- **Does not meet ANSI/ISEA 107 requirements**

7.25 oz. Twill, 65% Polyester / 35% Cotton  
Country of Origin: Imported

**JT50EC** (Reg) S-3XL, (Long) L-2XL

**JT50EN** (Reg) S-3XL, (Long) L-2XL



Charcoal with  
Yellow/Silver  
Visibility  
Trim **EC**



Navy with  
Yellow/Silver  
Visibility Trim  
**EN**

## ENHANCED VISIBILITY TWILL ACTION BACK COVERALL

- 2.5" Yellow/Silver enhanced visibility trim
- Chest pockets
- Oversized back pockets
- Rule pocket
- Fit chart MFC-24
- **Industrial laundry friendly**
- **Does not meet ANSI/ISEA 107 requirements**

7.25 oz. Twill,  
65% Polyester / 35% Cotton  
Country of Origin: Imported

**CT10EN** (Reg) 38-54, (Long) 44-48



Navy with  
Yellow/Silver  
Visibility Trim  
**EN**



CT10EN







# CUSTOMIZATION



## VISIBILITY APPAREL CUSTOMIZATION

### REFLECTIVE TRIM

There are several options and widths of reflective trim that can be selected for attachment to your garments. A few examples of how a work shirt, pant, or coverall can be transformed into an enhanced visibility garment are provided on the next several pages. For additional placement information, contact a Workwear Outfitters Customer Service Representative at: 1.800.733.5271.

#### HW - HOME WASH

(NOT SHOWN ACTUAL SIZE)



Description: 1" Silver, EH5226

Activity: GV



Description: 2" Silver, EH5225

Activity: 1O



Description: 1 ½" Yellow/ ½" Silver/Yellow, EH5281

Activity: YV

#### IL - INDUSTRIAL LAUNDRY

(NOT SHOWN ACTUAL SIZE)



Description: 1 ½" Yellow/ ½" Silver/Yellow, EH5430

Activity: 1K



Description: 2" Yellow/ ¾" Silver/Yellow, EH5221

Activity: 3N



Description: 2 ½" Yellow/ ½" Silver/Yellow, EH5282

Activity: 1E

#### IL - INDUSTRIAL LAUNDRY

(NOT SHOWN ACTUAL SIZE)



Description: ½" Silver, EH5279



Description: 1" Silver, EH5277



Description: 2" Silver, EH5276

#### IL - INDUSTRIAL LAUNDRY

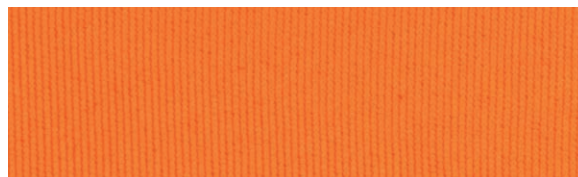
(NOT SHOWN ACTUAL SIZE)



Description: 1 ½" Orange/ ½" Silver/Orange, EH5280



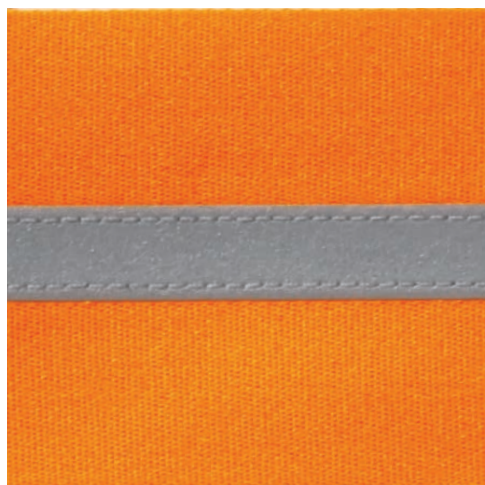
Description: 2 ½" Orange/ ½" Silver/Orange, EH5278



Description: 2 ½" Orange, EH5336



# 2½" ORANGE/SILVER/ORANGE PACKAGED STRIPE OPTIONS



**ACTUAL SIZE SHOWN:**  
2½" Orange/ ½" Silver/Orange

SHOWN ON LOT# ST52CH  
PACKAGE CODE: DM6



SHOWN ON LOT# PT62CH  
PACKAGE CODE: DM7



SHOWN ON LOT# CTIOCH  
PACKAGE CODE: DTI

## 2" YELLOW/SILVER/YELLOW PACKAGED STRIPE OPTIONS



ACTUAL SIZE SHOWN:  
2" Yellow/ 3/4" Silver/Yellow

SHOWN ON LOT# SPI4NV  
PACKAGE CODE: FXO



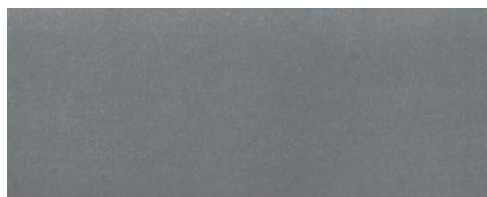
SHOWN ON LOT# PT20NV  
PACKAGE CODE: DP3

SHOWN ON  
LOT# JT22NV  
PACKAGE  
CODE: D7I





# 1" SILVER PACKAGED STRIPE OPTIONS



ACTUAL SIZE SHOWN: 1" Silver



SHOWN ON LOT# PT66NV  
PACKAGE CODE: IW4



SHOWN ON LOT# PD60PW  
PACKAGE CODE: DLK



SHOWN ON  
LOT# SY60LB  
PACKAGE  
CODE: IV7

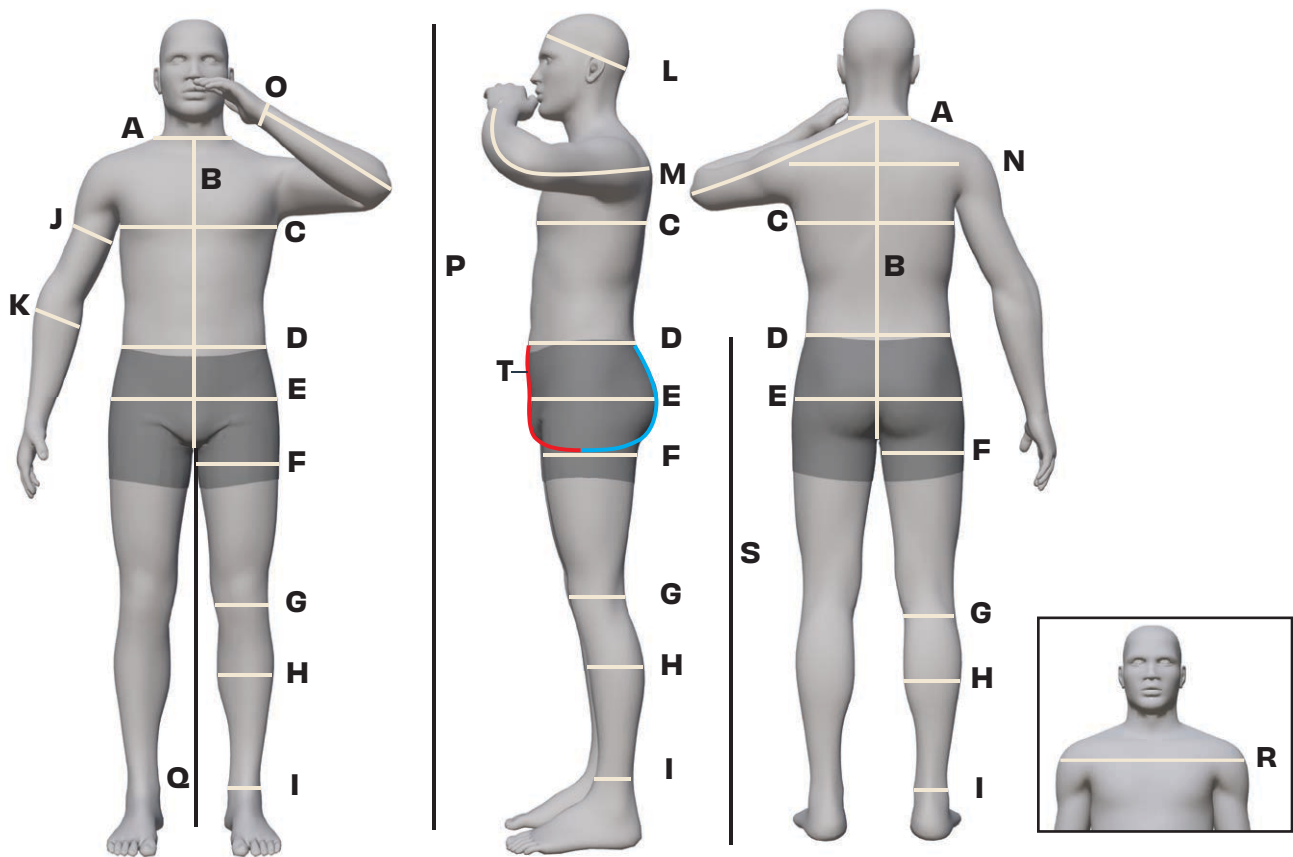


SHOWN ON  
LOT# JP66NV  
PACKAGE  
CODE: 4PI

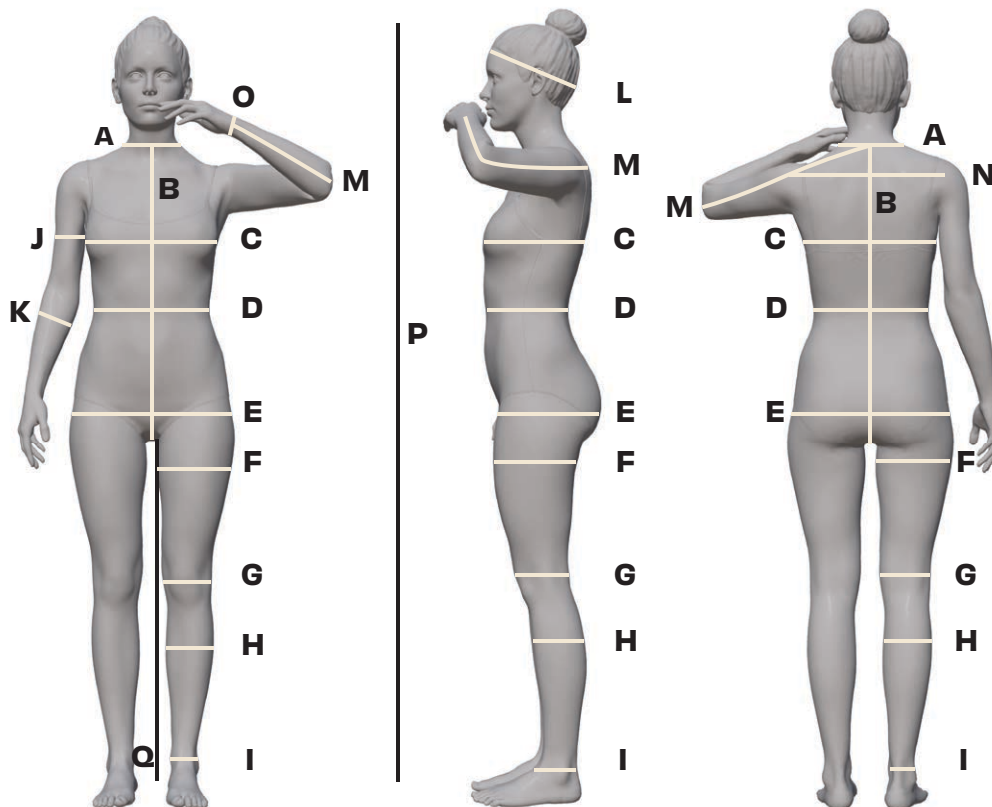


# HOW TO MEASURE

## MEN'S MEASUREMENTS



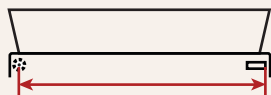
## WOMEN'S MEASUREMENTS





## A - Neck

Measure around the base of your neck where a collared shirt would fit; or measure a collarband of a shirt that fits you well. Lay the collarband flat. Measure from the beginning of the buttonhole to the center of the button.



## B - Trunk

Measure from the base of the neck (front) down around the crotch and back up to the bottom of the collar. For coveralls only - see diagram.

## C - Chest / Bust

Measure at the fullest part of your chest / bust. Hold the tape firmly, but not tightly. Be sure the tape is level and straight across your back. Stand naturally with your arms down by your side.

## D - Waist / Mid Section

First, remove your belt. Then measure over shirt (not over pants) at the position you normally wear your pants. Hold the tape firmly, but not tightly. Note - For shirts and coveralls, measure the largest portion of the mid-section.

## E - Hips

Stand with your heels together. Measure around the fullest part of the hips. Hold the tape measure straight and level.

## F - Thigh

Measure the circumference of the upper leg close to the crotch (approximately 1" below crotch).

## G - Knee

With the leg straight, measure the knee circumference over the knee cap and parallel to the floor.

## H - Calf

Measure the circumference of the largest part of the lower leg approximately half way between the knee and ankle and parallel to the floor.

## I - Ankle

Measure the ankle circumference over the ankle bone and parallel to the floor.

## J - Upper Arm / Bicep

Measure the maximum circumference of the upper arm just below the underarm.

## K - Forearm

Measure the maximum circumference of the forearm at approximately 6" above the wrist.

## L - Cap / Hat Size

Measure the circumference of the head at its widest diameter, approximately 1/8" above the ears.

## M - Sleeve

Bend the elbow as shown (see M). Start at the center back neck and measure across shoulder to the elbow and down to the wrist bone.

## N - Across Shoulder

While standing with arms down, measure across the back from one shoulder joint to the other.

## O - Wrist

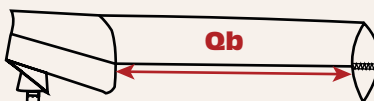
Measure the wrist circumference over the wrist bone.

## P - Height

Stand straight against a wall without your shoes. Make a mark level with the top of your head. Measure from this point down to the floor.

## Q - Inseam

Standing straight, measure the distance from the crotch to just below the ankle bone. **Or** - using similar style pants that fit you well; lay garment flat and with the front and back creases smooth. Measure the inside seam of one leg from the bottom of the hem to the crotch (see Qb).



## R - Overarm (Blazers)

With arms at the sides, measure around the broadest part of the shoulders and upper arms, keeping the tape level at all times. If overarm is more than 7" larger than the chest, go up one size.

## S - Outseam

Measure along the outside of the leg from the top of the waistband to the bottom of the hem or just below the ankle bone.

## Sa - Outseam on Garment

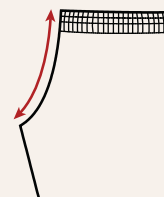
On an existing garment: lay garment flat, measure along the outseam from the top of the band to the bottom hem.



## T - Front and Back Rises

**Front** - this is the distance from the center front at the top of the waistband to the intersection of the crotch seam.

**Back** - this is the distance from the center back waistband to the intersection of the crotch seams.



# MEN'S MEASURING CHARTS

## MFC-12 MEN'S JACKETS

Alpha Size	XS		S		M		L		XL		XXL		3XL		4XL		5XL		6XL		7XL		8XL	
Chest Size	32	34	36	38	40	42	44	46	48	50	52	54	56	58	60	62	64	66	68	70	72	74	76	78
Chest Max.	32"	34"	36"	38"	40"	42"	44"	46"	48"	50"	52"	54"	56"	58"	60"	62"	64"	66"	68"	70"	72"	74"	76"	78"

NOTE: If waist size is larger than chest size, use waist measurement as size. HEIGHT: Short: 5'3" - 5'7" Regular: 5'7" - 5'11" Long: 5'11" - 6'3" XLong: 6'3" - 6'7"

## MFC-17 MEN'S PARKAS

Alpha Size	XS	S	M	L	XL	XXL	3XL	4XL	5XL
Chest Max.	34	36	40	44	48	50	52	54	56

NOTE: If waist size is larger than chest size, use waist measurement as size.

## MFC-18 MEN'S VEST

Alpha Size	S/M	L/XL	2XL/3XL	4XL/5XL	6XL/7XL
Chest Max.	40	48	52	56	60

## MFC-24 MEN'S UNLINED COVERALLS AND OVERALLS

Alpha Size	XS		S		M		L		XL		XXL		3XL		4XL		5XL	
Numeric Size	32	34	36	38	40	42	44	46	48	50	52	54	56	58	60	62	64	66
Chest Size	30½-32	32½-34	34½-36	36½-38	38½-40	40½-42	42½-44	44½-46	46½-48	48½-50	50½-52	52½-54	54½-56	56½-58	58½-60	60½-62	62½-64	64½-66
Waist Max.	30½	32½	34½	36½	38½	40½	42½	44½	46½	48½	50½	52½	54½	56½	58½	60½	62½	64½

Short: 5'3" - 5'7" Regular: 5'7" - 5'11" Long: 5'11" - 6'3" XLong: 6'3" - 6'7"

## MFC-25 MEN'S JACKET

Alpha Size	XS	S	M	L	XL	XXL	3XL	4XL	5XL
Chest Max.	36	39	42	45	48	52	55	58	63

NOTE: If waist size is larger than chest size, use waist measurement as size.



**MFC-105 MEN'S JACKETS**

Alpha Size	XS	S	M	L	XL	XXL	3XL	4XL	5XL
Chest Max.	36	39	42	45	49	53	57	61	65

NOTE: If waist size is larger than chest, size, use waist measurement as size.

**MFC-141 MENS FIT CHART**

Alpha Size	XS		S		M		L		XL		XXL		3XL		4XL	
Numeric Size	30	32	34	36	38	40	42	44	46	48	50	52	54	56	58	60
Chest	32¾-34¼	34¼-35¾	35¾-37¼	37¼-38¾	38¾-40¼	40¼-42	42-44	44-46	46-48¼	48¼-50½	50½-52¾	52¾-55	55-57¼	57¼-59½	59½-61¾	61¾-63¾
Waist Max.	35¾		38¾		42		46		50½		55		59½		63¾	
Hip Max.	35¾		38¾		42		46		50½		55		59½		63¾	

Alpha Size	5XL		6XL		7XL		8XL	
Numeric Size	62	64	66	68	70	72	74	76
Chest	63¾-66	66-68¼	68¼-70½	70½-72¾	72¾-75	75-77¼	77¼-79½	79½-81¾
Waist Max.	68¼		72¾		77¼		81¾	
Hip Max.	68¼		72¾		77¼		81¾	

HEIGHT: Short=5' 3" - 5'7" Regular=5'7" - 5'11" Long=5'11" - 6'3" Extra Long=6'3" - 6'7"

**MFC-151 MENS ALPHA WORK SHIRT FIT CHART**

Alpha Size	XS	S	M	L	XL	2XL	3XL	4XL	5XL	6XL
Neck Max.	13	14	15	16	17	18	19	20	21	22
Chest Range	30-34	34-38	38-42	42-46	46-50	50-53	53-56	56-59	59-61	61-65
Waist Max.	32	37	42	46	50	53	57	60	64	68
Hip Max.	36	40	44	48	52	56	60	64	68	72

HEIGHT: Short: 5' 3" - 5'7" Regular: 5' 7" - 5'11" Long: 5'11" - 6'3" XLong: 6'3" - 6'7"



## GLOSSARY OF TERMS AND DEFINITIONS

### **HIGH VISIBILITY SAFETY APPAREL (HVSA)** –

Personal protective safety clothing intended to provide visibility during daytime, nighttime and other low-light conditions and meets the requirements of Performance Class 1, 2 or 3 and Type O, R or P as defined by ANSI/ISEA 107 (*American National Standard for High-Visibility Safety Apparel*).

### **ENHANCED VISIBILITY APPAREL** –

Garments designed to improve wearer's visibility but do not meet the requirements and are not certified to ANSI/ISEA 107 or any other hi-visibility industry standard.

### **PERFORMANCE CLASS** –

A category of performance defined by the minimum area of hi-visibility background material and retro-reflective striping. Design specifications for each performance class correspond with the needs of the user in the expected risk environment.

### **BACKGROUND MATERIAL** –

Colored fluorescent material intended to be highly conspicuous, during daytime and low-light conditions. Fluorescent background materials must be 3rd party certified per ANSI/ISEA 107.

### **RETRO-REFLECTIVE MATERIAL** –

Material that reflects and returns light in the direction from which it came. Retro-reflective materials must be 3rd party certified per ANSI/ISEA 107.

### **COMPLIANCE** –

Garments and materials (background fabric, combined performance material and retro-reflective trim) shown to meet the requirements of ANSI/ISEA 107. Garment compliance can be noted through the Declaration of Conformity. Hi-visibility background materials, combined performance materials, and retro-reflective materials must be 3rd party certified.

### **CERTIFICATION OF THE GARMENT** –

Documentation from either a 3rd party certifier or the garment manufacturer demonstrating compliance with performance requirements set forth in ANSI/ISEA 107. Manufacturers choosing self-certification must use the Declaration of Conformity provided in the standard.





## INDEX

LOT #	PAGE	SIZE CHART
CTIOEN	35	MFC-24
CTIOHVB	27	MFC-24
CTIO0VB	27	MFC-24
HJIOYB	26	MFC-105
HJIOYE	34	MFC-105
JT50EC	35	MFC-12
JT50EN	35	MFC-12
JY32AB	25	MFC-12
JY32HV	25	MFC-12
JY34YB	12	MFC-25
JY38HVB	24	MFC-17
PG20EV	33	
PD60ED	32	
PTI8HVB	27	
PT20EN	33	
PT88EN	33	
SK0IHV	32	
SK03HV	24	
SK07HV	18	
SK07OV	18	
SK09HV	23	
SKI7HV	18	
SKI7OV	18	
SKI9HV	23	

LOT #	PAGE	SIZE CHART
SK25HV	19	
SK27OV	19	
SK29HV	19	
SK57HV	18	
SK67HV	18	
SPI4EG	30	MFC-15I
SPI4EN	30	MFC-15I
SPI4ON	30	MFC-15I
SPI4WM	30	MFC-15I
SP24EG	30	MFC-15I
SP24EN	30	MFC-15I
SP24ON	30	MFC-15I
SP24WM	30	MFC-15I
SSI4AB	22	MFC-15I
SSI4HV	17	MFC-15I
SSI4OF	22	MFC-15I
SSI4OR	32	MFC-15I
SSI4O2	17	MFC-15I
SSI4YE	32	MFC-15I
SS24AB	22	MFC-15I
SS24HV	17	MFC-15I
SS24OF	22	MFC-15I
SS24OR	32	MFC-15I
SS24O2	17	MFC-15I

LOT #	PAGE	SIZE CHART
SS24YE	32	MFC-15I
SVY3AB	23	MFC-14I
SVY4AB	23	MFC-14I
SXI4AB	20-21	MFC-15I
SXI4HV	14-15	MFC-15I
SX24AB	20-21	MFC-15I
SX24HV	14-15	MFC-15I
SYI4AB	22	MFC-15I
SYI4HV	16	MFC-15I
SYI4YC	13	MFC-15I
SYI4YE	31	MFC-15I
SYI4YG	13	MFC-15I
SYI4YN	13	MFC-15I
SY24AB	22	MFC-15I
SY24HV	16	MFC-15I
SY24YC	13	MFC-15I
SY24YE	31	MFC-15I
SY24YG	13	MFC-15I
SY24YN	13	MFC-15I
SY70YC	12	MFC-15I
SY70YN	12	MFC-15I
SY80YC	12	MFC-15I
SY80YN	12	MFC-15I
VYV6YE	14	MFC-18



CAUTION: Garments contained in this catalog meet government flammability Class 1 requirements but do not provide protection from ignition sources, molten substances or chemical exposure. Special flame-resistant garments are available if required.

Product images and fabric swatches shown here are photomechanically reproduced. As a result, colors may vary from actual fabric samples.

© 2024 Workwear Outfitters, LLC  
Red Kap®, a brand of Workwear Outfitters, LLC



[redkap.com](https://redkap.com)    